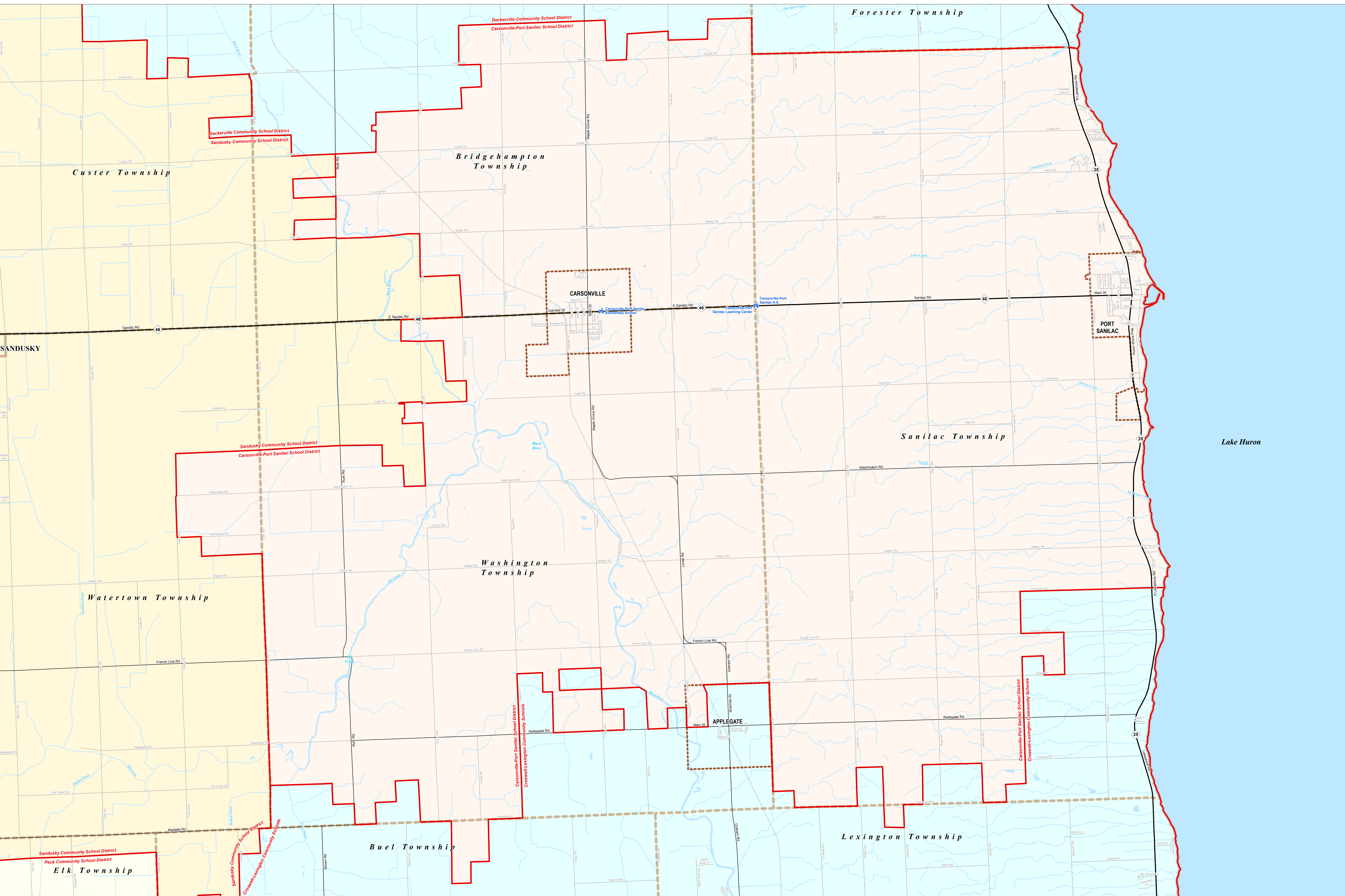
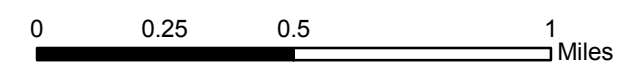


CARSONVILLE-PORT SANILAC SCHOOL DISTRICT

Sanilac ISD



Note: Non K-12 School Districts identified with Asterisk () in Name

All information presented in this publication is in the public domain and may be reproduced, reprinted, and redistributed as desired.

Michigan Geographic Framework (MGM) is a project of the Michigan Department of Transportation (MDOT) and the Michigan State Office of Geographic Information Systems (MOSGIS). It is a collaborative effort between MDOT and MOSGIS to create a consistent and accurate geographic information system for the state of Michigan. The MGM is a project of the Michigan Department of Transportation (MDOT) and the Michigan State Office of Geographic Information Systems (MOSGIS). It is a collaborative effort between MDOT and MOSGIS to create a consistent and accurate geographic information system for the state of Michigan.



Legend	
School District	School
County	Water Feature
City	River, Stream, or Drain
Township	Railroad
Village	Freeway
Census Designated Place	Primary Road
	Local Road



Source: Michigan Geographic Framework, v13a

